

SOUTH-BOHEMIAN REGION

By Sabina Tomašíková and
Veronika Lyčková



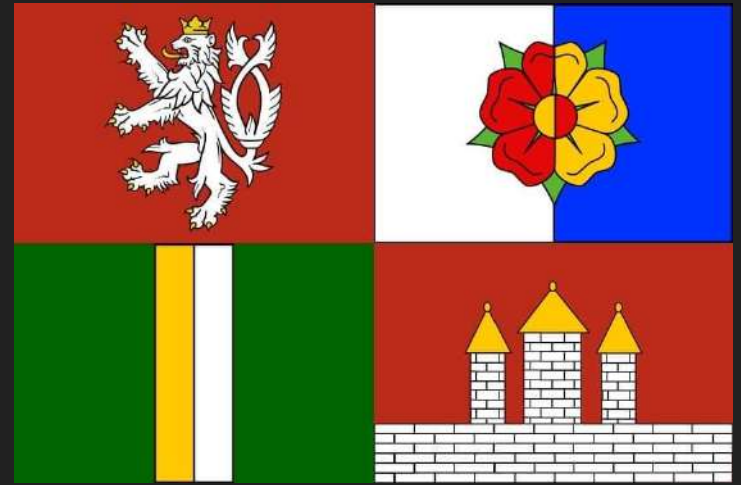
MAIN INFO

Position: South Bohemia

County seat: Czech Budejovice

Surface:

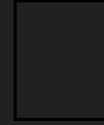
- North- Central Bohemian Uplands
- Central- Českobudějovická and Třeboň field
- South- Šumava-> Plechý 1 378 m. Above sea level, Novohradské mountains-> Kamenec 1 072 m. Above sea level.
- East- Bohemian-Moravian Highlands



REGION ERB



~ ~ ~ WATER ~ ~ ~



Vltava- Otava is the left tributary
and Lužice, Malše, Stropnice are
right tributaries



-Pond ➤ Rožmberk



-Dam ➤ Lipno



PLA

NP

Protected
landscape area

Třeboň region



•Šumava •Blanský forest

National parks

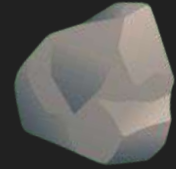
Šumava



THE LARGEST NP OF THE CZECH
REPUBLIC



~•ECONOMY•~



- Mining- gravel sand, brick clay
- Industry- food, Budweiser Budvar, woodworking, production of furniture, pencils KOH-I-NOOR
- Agriculture- crop production, cultivation, cereals, oilseeds, potatoes
- Animal- cattle, pig, duck breeding, fish farming



Cities

Tábor, Strakonice, Prachatice, Český Krumlov, Písek, Jindřichův Hradec



Castle

HLUBOKÁ
NAD
VLTAVOU



Nuclear power plant: Temelín



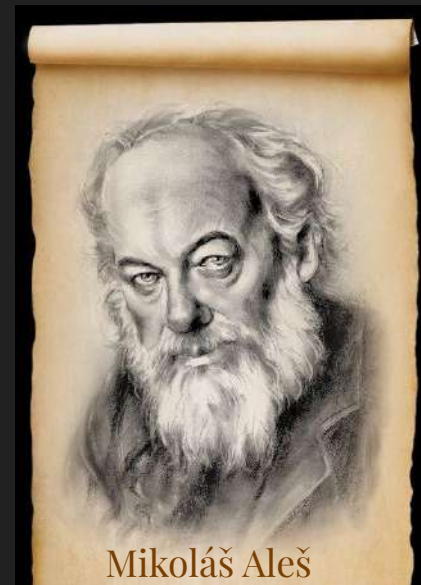
•CELEBRITIES•



He was a preacher.



He was a chieftain.



He was a painter.

!FEW FACTS!

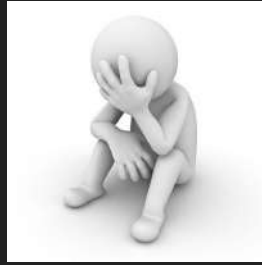
This region was a big target for many wars. A city that was built by Přemysl Otakar the second, was to make fun of the royal society Vítkovců. That made them have affair against each other and have a war in the 70's the 13th century.

Přemysl Otakar the second



The war

THERE IS ALSO A YOUTUBER CAMP!



Its a camp where kids play videogames, take pics with their favorite youtubers and go on trips! Its really fun when your dream can come true on that place and its really fun with them, Its a great fun for kids and teens.





~•Thank you for your attention!~

